

Complex type EMI Filters

<PMZ AMV Series>

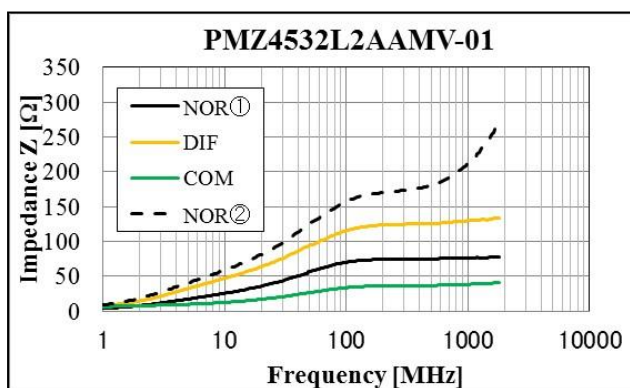
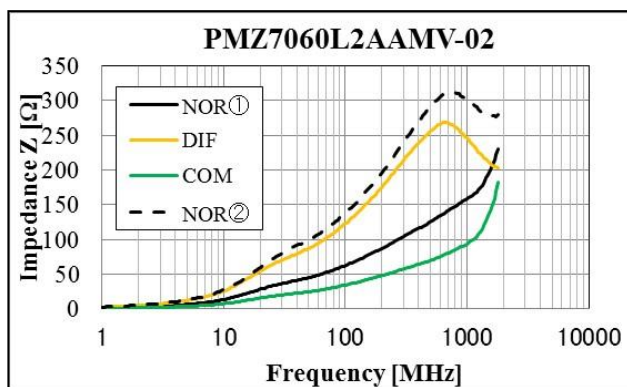
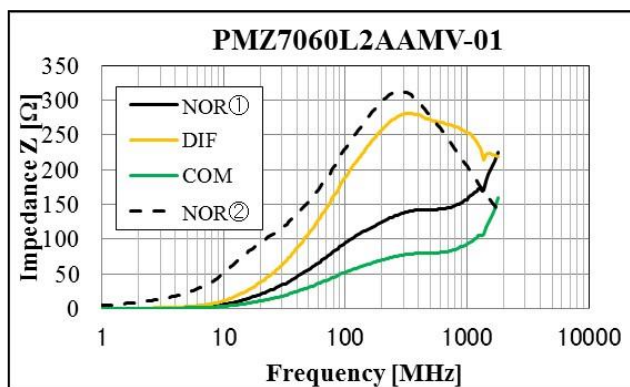
PMZ AMV Series

Part number list and Rating

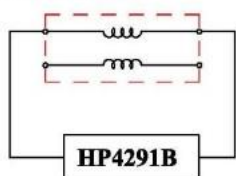
Part Number	Impedance (Ω at 100MHz)	Rated Voltage DC (V)	Rated Current DC (A)	DC Resistance ($m\Omega$ max.)	Operating temp. ($^{\circ}C$.) ※
PMZ7060L2AAMV-01	100	100	10	5	-55~+155
PMZ7060L2AAMV-02	65	100	10	5	-55~+155
PMZ4532L2AAMV-01	70	100	10	5	-55~+155

※Include self-fever temperature

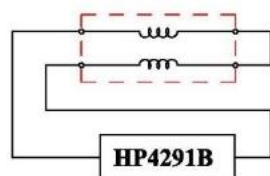
Impedance Frequency Characteristic



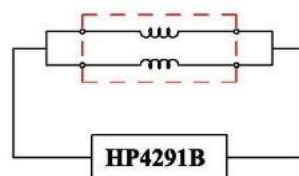
Normal mode①



Differential mode



Common mode



Normal mode②

