

■特征 / Features

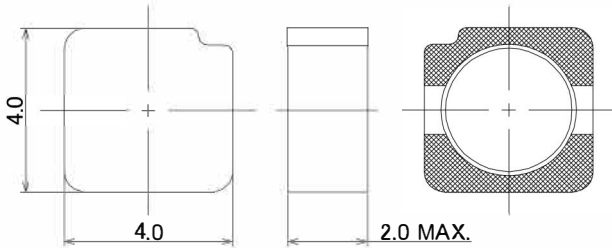
- 闭磁路 小型低背功率电感
Shielded, small foot print and low profile power inductors.
4.0mm × 4.0mm (Typ) × h2.0mm (Max)
- 闭磁路结构 低噪音, 少漏磁
Low noise and flux by closed magnetic path structure.

■应用 / Applications

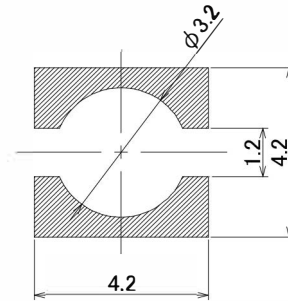
- 手机, 液晶显示屏等
DC/DC转换器用
DC/DC converters for
Cellular phones, LCD Panel and others.

■外形尺寸·焊盘模式 / Dimensions·Land Pattern

(Unit : mm)



Recommended Land Pattern (Unit : mm)



■规格 / Specifications

系列 Series	品名型号 Part number	电感量 L [μH] Inductance *(1)	直流阻抗 Rdc [Ω] DC resistance *(2)	额定电流 Idc1 / Idc2 [A] Rated current *(3)	使用温度范围 Ta [°C] Operating temperature range *(4)
MIB4020-W	MIB4020M-R50W	0.5±30%	0.021	5.28 / 4.36	-40°C ~ 125°C
	MIB4020M-1R0W	1.0±30%	0.026	4.12 / 3.78	
	MIB4020M-2R2W	2.2±20%	0.040	2.72 / 2.78	
	MIB4020M-3R3W	3.3±20%	0.047	2.34 / 2.61	
	MIB4020M-4R7W	4.7±20%	0.063	1.96 / 2.21	
	MIB4020M-6R8W	6.8±20%	0.078	1.61 / 2.03	
	MIB4020M-100W	10.0±20%	0.11	1.35 / 1.73	
	MIB4020M-150W	15.0±20%	0.16	1.22 / 1.37	
	MIB4020M-220W	22.0±20%	0.21	0.95 / 1.20	
	MIB4020M-470W	47.0±20%	0.46	0.66 / 0.74	
MIB4020M-101W	100.0±20%	0.96	0.46 / 0.53		

(1) Ta=25°C, Idc=0A (2) Ta=25°C

*Note: (3) Idc1: 电感变化率 Inductance change ratio $|\Delta L/L| \leq 30\%$, Idc2: 温度上升 Temperature rise $\Delta T \leq 40^\circ\text{C}$

(4) 包括自温上升 Including self temperature rise

(代表值/Typical)

■直流叠加特性 / DC bias current characteristics

