

■特征 / Features

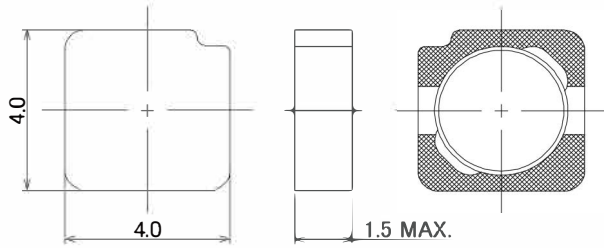
- 闭磁路 小型低背功率电感
Shielded, small foot print and low profile power inductors.
- 4.0mm × 4.0mm (Typ) × h1.5mm (Max)
- 闭磁路结构 低噪音, 少漏磁
Low noise and flux by closed magnetic path structure.

■应用 / Applications

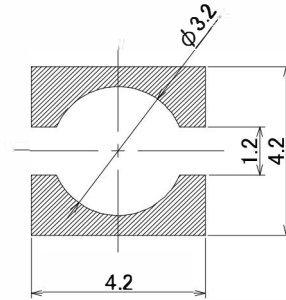
- 手机, 液晶显示屏等
DC/DC转换器用
DC/DC converters for
Cellular phones, LCD Panel and others.

■外形尺寸·焊盘模式 / Dimensions·Land Pattern

(Unit : mm)



Recommended Land Pattern (Unit : mm)



■规格 / Specifications

系列 Series	品名型号 Part number	电感量 L [μ H] Inductance *(1)	直流阻抗 R _{dc} [Ω] DC resistance *(2)	额定电流 I _{dc1} / I _{dc2} [A] Rated current *(3)	使用温度范围 T _a [°C] Operating temperature range *(4)
MIB4015-W	MIB4015M-1R0W	1.0 \pm 30%	0.032	3.75 / 3.02	-40°C ~ 125°C
	MIB4015M-1R8W	1.8 \pm 30%	0.046	2.79 / 2.49	
	MIB4015M-3R3W	3.3 \pm 20%	0.061	2.30 / 2.17	
	MIB4015M-4R7W	4.7 \pm 20%	0.098	1.83 / 1.68	
	MIB4015M-6R8W	6.8 \pm 20%	0.13	1.51 / 1.41	
	MIB4015M-100W	10.0 \pm 20%	0.19	1.25 / 1.15	
	MIB4015M-150W	15.0 \pm 20%	0.28	1.06 / 1.00	
	MIB4015M-220W	22.0 \pm 20%	0.41	0.88 / 0.79	

(1) T_a=25°C, I_{dc}=0A (2) T_a=25°C
 *(3) I_{dc1}: 电感变化率 Inductance change ratio $|\Delta L/L| \leq 30\%$, I_{dc2}: 温度上升 Temperature rise $\Delta T \leq 40^\circ\text{C}$
 *(4) 包括自温上升 Including self temperature rise

(代表值/Typical)

■直流叠加特性 / DC bias current characteristics

