

■特征 / Features

- 闭磁路 小型低背功率电感
Shielded, small foot print and low profile power inductors.
3.0mm × 3.0mm (Typ) × h1.2mm (Max)
- 闭磁路结构 低噪音, 少漏磁
Low noise and flux by closed magnetic path structure.

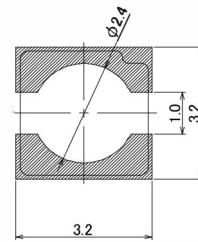
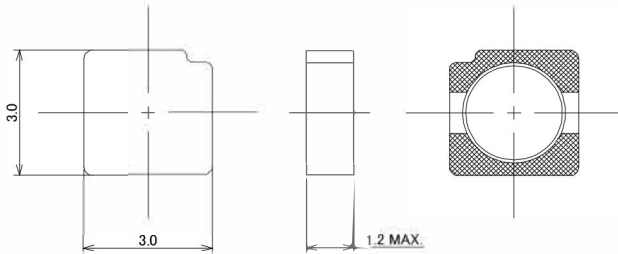
■应用 / Applications

- 手机, 液晶显示屏等
DC/DC转换器用
DC/DC converters for
Cellular phones, LCD Pannel and others.

■外形尺寸·焊盘模式 / Dimensions·Land Pattern

(Unit : mm)

Recommended Land Pattern (Unit : mm)



■规格 / Specifications

系列 Series	品名型号 Part number	电感量 L [μH] Inductance *(1)	直流阻抗 Rdc [Ω] DC resistance *(2)	额定电流 Idc1 / Idc2 [A] Rated current *(3)	使用温度范围 Ta [°C] Operating temperature range *(4)
MIB3012-W	MIB3012M-R50W	0.5±30%	0.037	3.23 / 2.87	-40°C ~ 125°C
	MIB3012M-1R0W	1.0±30%	0.042	2.39 / 2.43	
	MIB3012M-2R2W	2.2±20%	0.081	1.70 / 1.81	
	MIB3012M-3R3W	3.3±20%	0.098	1.44 / 1.60	
	MIB3012M-4R7W	4.7±20%	0.14	1.20 / 1.35	
	MIB3012M-6R8W	6.8±20%	0.21	0.98 / 1.06	
	MIB3012M-100W	10±20%	0.29	0.83 / 0.89	
	MIB3012M-150W	15±20%	0.42	0.68 / 0.72	
	MIB3012M-220W	22±20%	0.68	0.55 / 0.57	
	MIB3012M-330W	33±20%	1.11	0.42 / 0.43	
MIB3012M-470W	47±20%	1.39	0.37 / 0.39		

(1) Ta=25°C, Idc=0A (2) Ta=25°C

*Note: (3) Idc1: 电感变化率 Inductance change ratio $|\Delta L/L| \leq 30\%$, Idc2: 温度上升 Temperature rise $\Delta T \leq 40^\circ\text{C}$

(4) 包括自温上升 Including self temperature rise

(代表值/Typical)

■直流叠加特性 / DC bias current characteristics

