

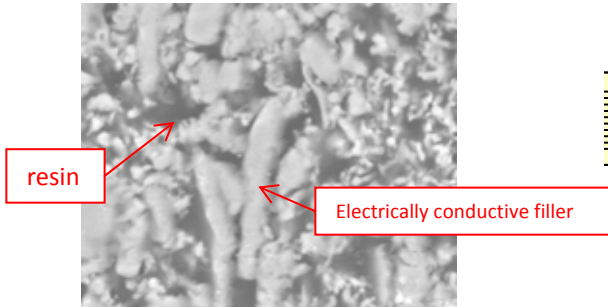
Composite terminal electrode most suitable for substrate stress measures

Highly-reliable terminal electrode

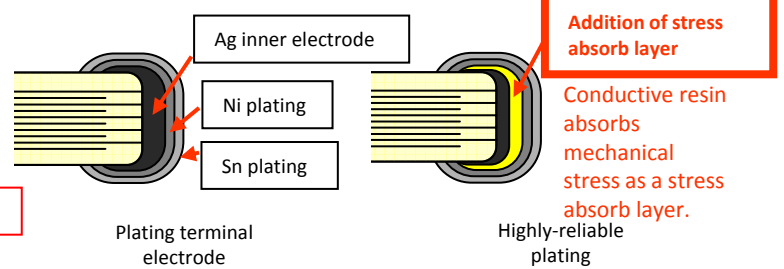
Composite material which is composed of flexible resin and conductive metal.
It absorbs substrate stress as flexibilities and heat-shocks

Electrically conductive resin

Composite material composed of resin and electrically conductive filler

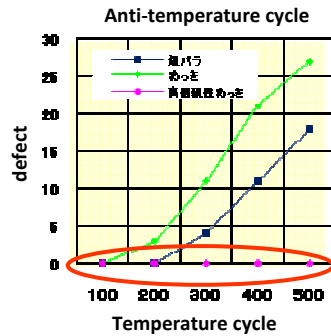
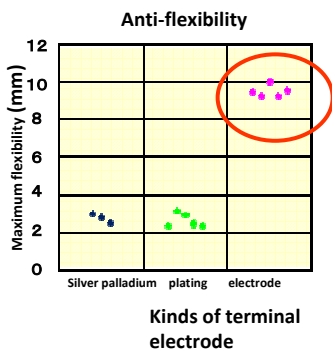


Terminal electrode structure



Effect

Applicable series



series	characteristics	voltage
RC,VC,VH,XC(R)	X7R	50V~250V
KC	Y5U	10V~50V
XC(CG)	C0G	1kV~5kV
TC,TH	X7R	350V

Surface-mounted products which are applicable for flexible substrate

Framed type capacitors

The frames absorb any substrate stress.
Effective for 『noise』measures of substrates.

Attendant effect 【『noise』measures】

