

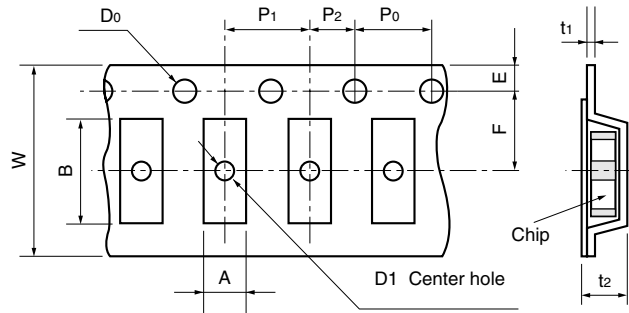
**PACKAGE FORM DETAILS**

[ LCF • CNF • CNH • CNG Series ]

■ Taping

Taping Specification

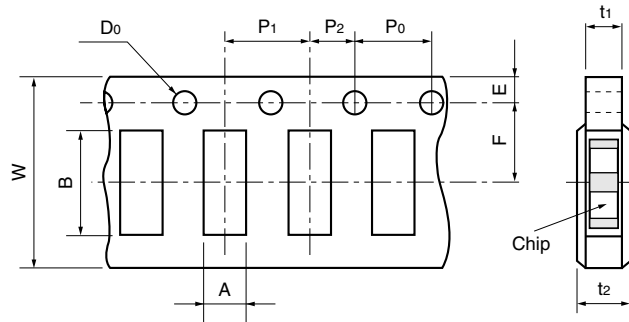
LCF20 (t=1.0), CNH20 (t=1.0), CNF41 and CNH41 type, CNX41 and CNG41 type : Plastic carrier tape dimensions



Unit : mm

	A	B	W	F	E	P1	P2	P0	D0	D1	t1	t2	Hole
LCF20(t=1.0) CNH20(t=1.0)	1.62±0.2	2.30±0.2	8.0±0.2	3.5±0.05	1.75±0.1	4.0±0.1	2.0±0.1	4.0±0.1	1.5 <sup>+0.1</sup> <sub>-0</sub>	1.5min.	0.6max.	2.0max.	Square embossed hole
CNF41 CNH41 CNX41 CNG41	1.80±0.2	4.70±0.2	12.0±0.2	5.5±0.05								2.5max.	

CNF10, CNH10, LCF20(t=0.8mm), CNF20, CNH20(t=0.8mm), CNF31, CNH31, CNA30 type : Paper carrier tape dimensions



Unit : mm

	A	B	W	F	E	P1	P2	P0	D0	t1	t2	Hole
CNF10	1.00±0.2	1.90±0.2	8.0±0.3	3.5±0.05	1.75±0.1	4.0±0.1	2.0±0.1	4.0±0.1	1.5 <sup>+0.1</sup> <sub>-0</sub>	1.1max.	1.4max.	Square Punch-hole
LCF20, CNF20, CNH20 (t=0.8)	1.62±0.2	2.30±0.2										
CNF31, CNH31	1.70±0.2	3.50±0.2										
CNH30 CNA30	2.00±0.2	3.60±0.2										

■ Package Qty.

Type	Taping Qty.	Bulk Qty.
CNF10, CNH10	4,000pcs/reel	1,000pcs/bag
LCF20, CNF20, CNH20 (t=0.8)	4,000pcs/reel	1,000pcs/bag
LCF20, CNH20 (t=1.0)	2,000pcs/reel	1,000pcs/bag
CNF31, CNH31	4,000pcs/reel	1,000pcs/bag
CNH30	4,000pcs/reel	1,000pcs/bag
CNA30	4,000pcs/reel	1,000pcs/bag
CNF41, CNH41	2,000pcs/reel	1,000pcs/bag
CNX41	2,000pcs/reel	1,000pcs/bag
CNG41	2,000pcs/reel	1,000pcs/bag