

PACKAGE FORM DETAILS

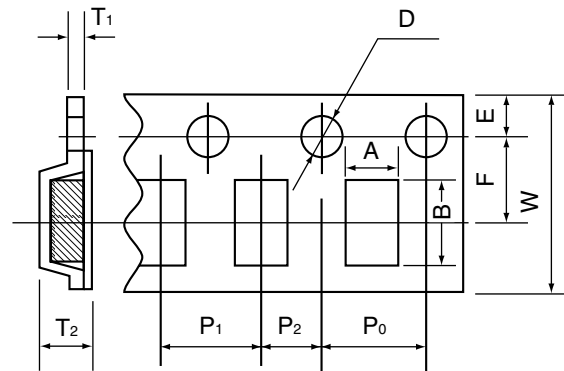
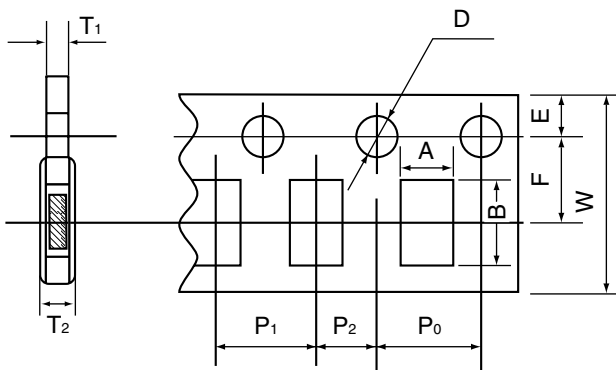
■Taping

Taping Specifications

Conforming to JIS C 0806

Paper Carrier

Plastic Carrier

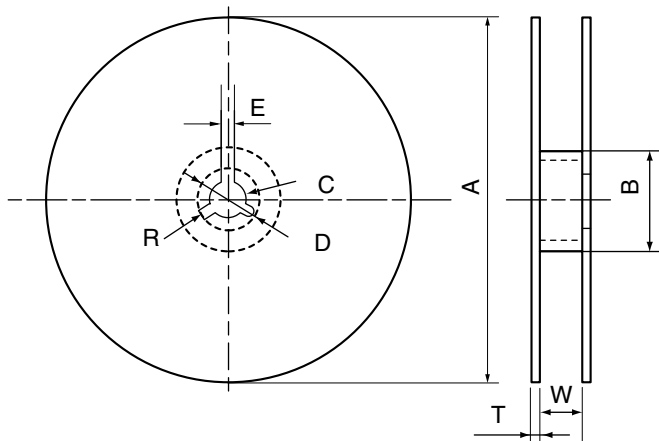


Unit : mm

Size	Carrier tape	A ±0.1	B ±0.1	W ±0.3	F ±0.05	E ±0.1	P1 ±0.1	P2 ±0.05	P0 ±0.1	D ±0.1	T1 max.	T2 max.
05	Paper Carrier	0.65	1.1	8.0	3.5	1.75	2.0	1.0	4.0	1.5	0.7	1.0
10		1.1	1.9	8.0	3.5	1.75	4.0	2.0	4.0	1.5	1.1	1.4
20	Embossed Carrier	1.65	2.4	8.0	3.5	1.75	4.0	2.0	4.0	1.5	0.6	1.5
30		2.0	3.6	8.0	3.5	1.75	4.0	2.0	4.0	1.5	0.6	1.5
40		2.8	3.6	8.0	3.5	1.75	4.0	2.0	4.0	1.5	0.6	1.5
70		3.6	4.9	12.0	5.5	1.75	8.0	2.0	4.0	1.5	0.6	3.7
80		5.4	6.1	12.0	5.5	1.75	8.0	2.0	4.0	1.5	0.6	5.0
90		6.9	8.2	16.0	7.5*	1.75	12.0	2.0*	4.0	1.5	0.6	5.5

*±0.1

Reel Type-size



Unit : mm

Size	05~40	70, 80	90
A	178±2	178±2	178±2
B	50min	50min	50min
C	13±0.5	13±0.5	13±0.5
D	21±0.8	21±0.8	21±0.8
E	2±0.5	2±0.5	2±0.5
W	10±0.5	14±0.5	18±0.5
T	2±0.5	2±0.5	2±0.5
R	1	1	1

Number of stored standard parts (pcs/reel)

Type	CVS05 CVL05	CVS10 CVL10	CVS20
T (mm)	0.5±0.2	0.8±0.2	1.25±0.2
Quantity	10,000	4,000	3,000

Type	CVG30		CVG40	
T (mm)	1.0±0.2	1.25±0.2	1.0±0.2	1.25±0.2
Quantity	3,000	2,000	3,000	2,000

Type	CVA30	CVA40	CVA70	CVA80	CVA90
T (mm)	1.5max	1.5max	2.0max	3.0max	4.5max
Quantity	2,000	2,000	800	800	250

Type	CVH80	
T (mm)	3.2max	4.5max
Quantity	500	250

Note: The number of stored parts differs according to the rating.