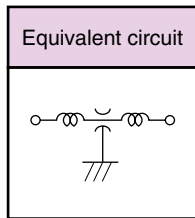
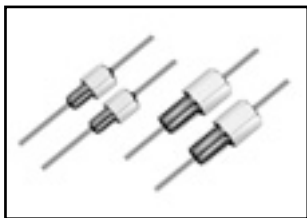


SCREW TYPE EMI FILTERS [FTT Series]



The FTT series are multilayer screw type EMI filters with T type circuit structure containing a feed through ceramic capacitor with an extremely high self-resonating frequency and multilayer suppressors. Therefore, the filters can efficiently suppress EMI over a wide range up to GHz without a significant decrease of insertion loss due to coaxial resonance, and also have high reliability for resin-sealing that has high resistance against humidity and thermal resistance.

Metric thread type

Part Number List • Specifications for M3, M4 Thread Type

Part number	Capacitance	Capacitance tolerance	Rated voltage	Withstanding voltage	Rated current	Temperature characteristics	Temp. range	Insertion loss	Style
FTT302AR102S-S	1,000pF	+50% -20%	100Vdc	250Vdc	10A dc	R (+15~-15%)	-55~+125°C	①	Style 1
FTT302AR472S-S	4,700pF							②	
FTT302AR103S-S	10,000pF							③	
FTT402AR102S-S	1,000pF							④	Style 2
FTT402AR103S-S	10,000pF							⑤	
FTT402AR223S-S	22,000pF							⑥	
FTT402AR473S-S	47,000pF	⑦							

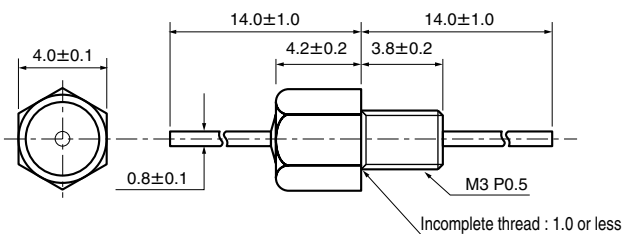
Inch thread type

Part Number List • Specifications for No.8-32 UNC-2A Thread Type

Part number	Capacitance	Capacitance tolerance	Rated voltage	Withstanding voltage	Rated current	Temperature characteristics	Temp. range	Insertion loss	Style
FTT412AR102S-S	1,000pF	+50% -20%	100Vdc	250Vdc	10A dc	R (+15~-15%)	-55~+125°C	④	Style 2
FTT412AR103S-S	10,000pF							⑤	
FTT412AR223S-S	22,000pF							⑥	
FTT412AR473S-S	47,000pF							⑦	

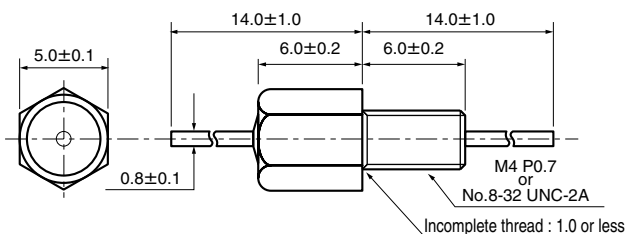
Dimensions (mm)

Style 1



Shell plating spec. : Nickel

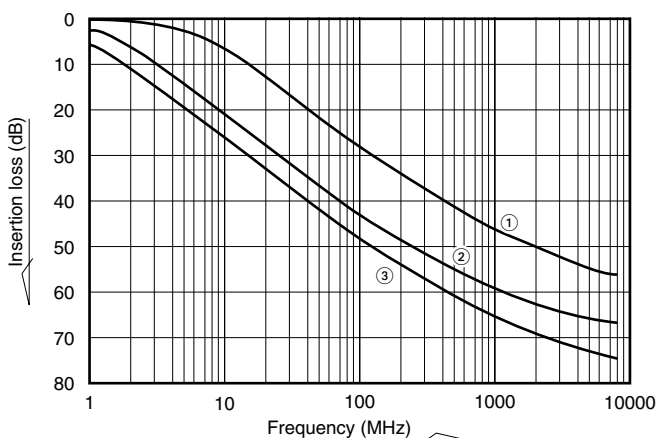
Style 2



Shell plating spec. : Nickel

Insertion loss (Reference)

FTT30 Type Insertion Loss data



FTT40, FTT41 Type Insertion Loss data

